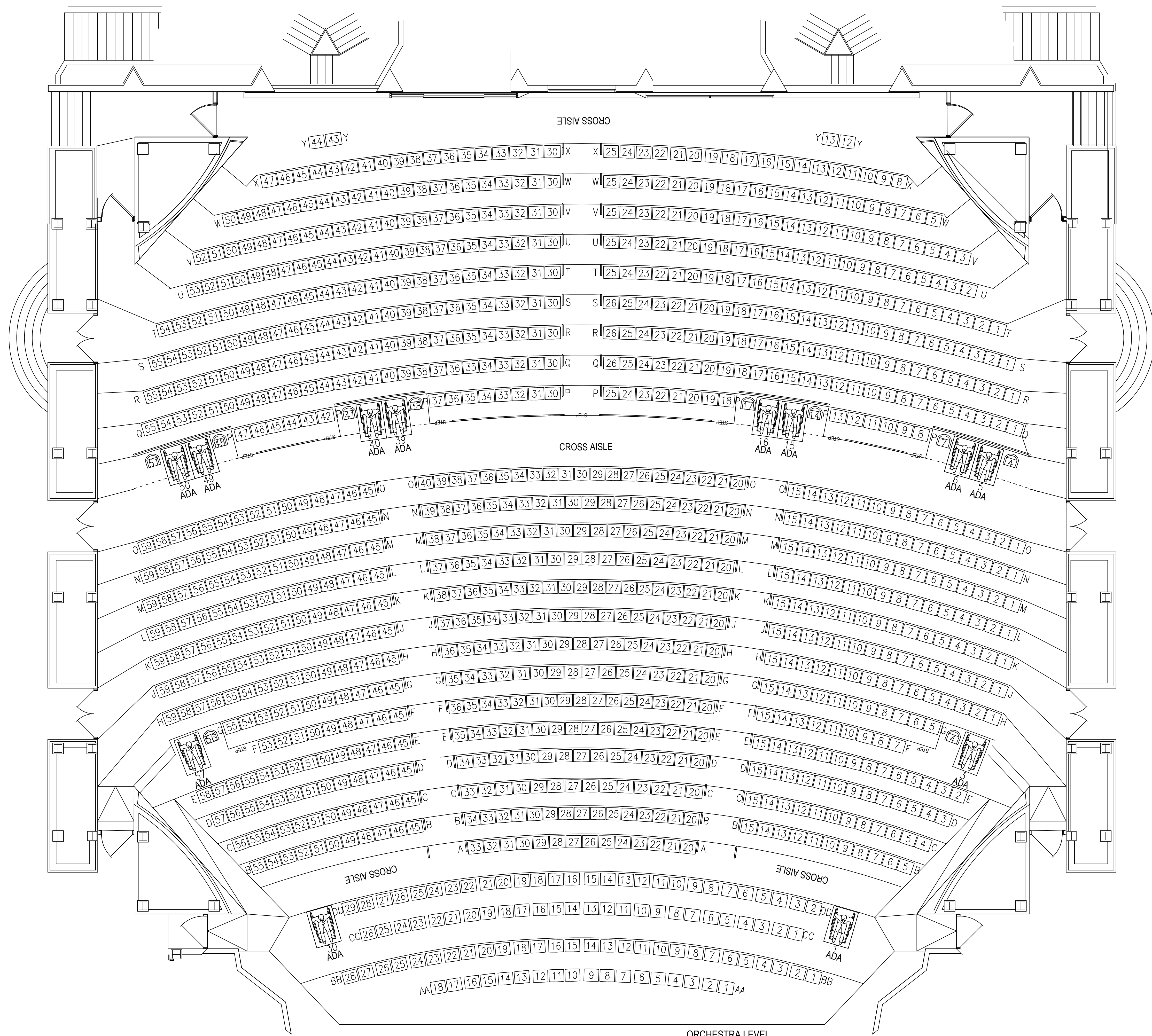


COMPLIANCE WITH THE REQUIRED LOCAL, NATIONAL BUILDING, ADA, AND SAFETY CODES IS THE EXCLUSIVE RESPONSIBILITY OF THE OWNER/ARCHITECT/CONTRACTOR. SEATING LAYOUT DRAWINGS ARE BASED ON CODE REQUIREMENTS FOR ASSEMBLY SEATING AS FOUND IN INTERNATIONAL BUILDING CODE (IBC) AND ADA CODE. CODE INFORMATION ABOVE IS OFFERED FOR INFORMATIONAL PURPOSES ONLY. IRWIN SEATING COMPANY TAKES NO RESPONSIBILITY FOR CODE INTERPRETATION OR COMPLIANCE.

RELEASE / REVISION	BY	DATE
A INITIAL RELEASE	AGW	9/15/20
B PER NEW INFORMATION RECEIVED	AGW	10/21/20
C ADDED COLOR SCHEME TO LAYOUT	AGW	11/03/20
D INSTALLATION COPY RELEASE	AGW	12/07/20
E AS-BUILT RELEASE	AGW	4/19/21
F AS-BUILT RELEASE	AGW	6/25/21



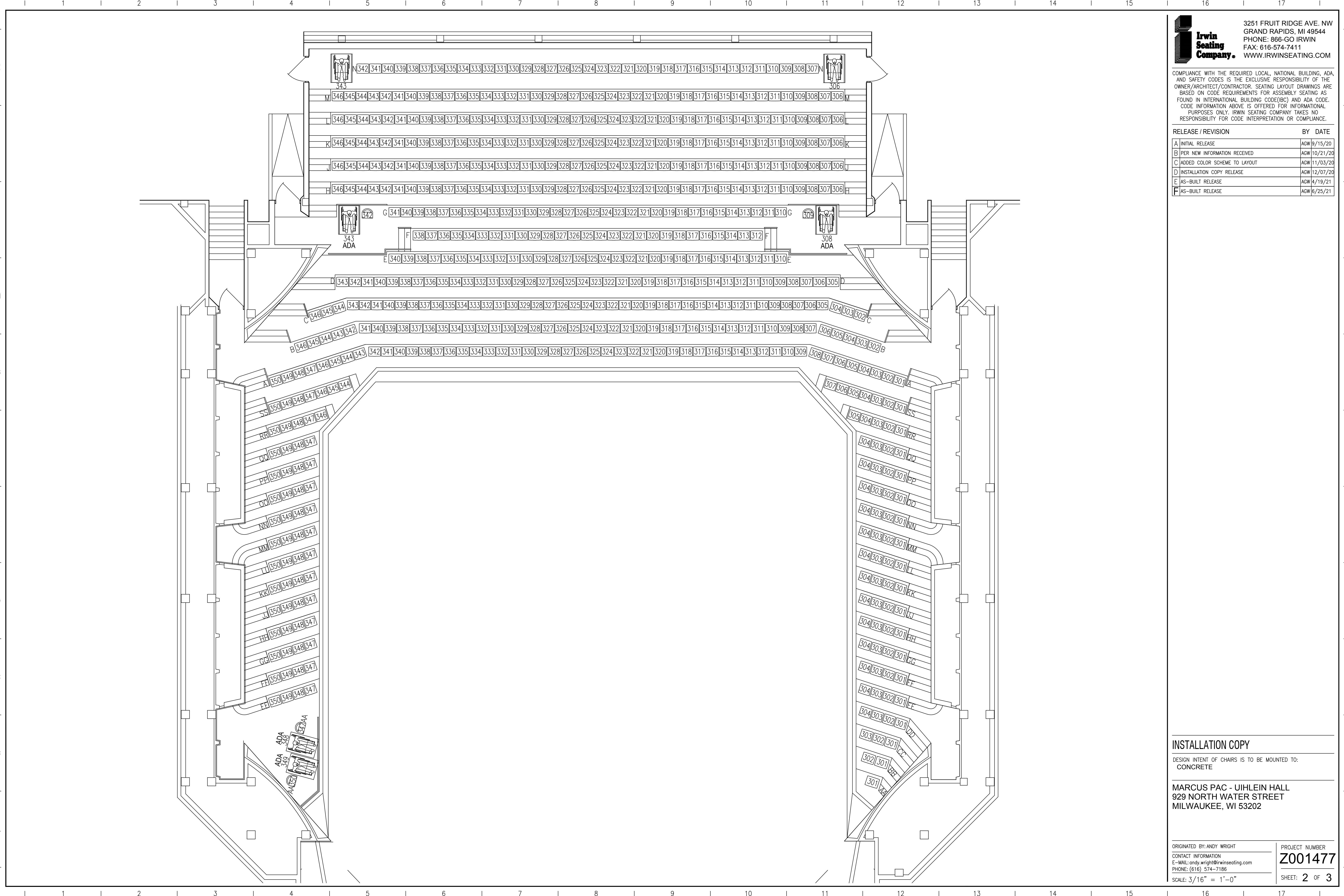
ORCHESTRA LEVEL

INSTALLATION COPY
 DESIGN INTENT OF CHAIRS IS TO BE MOUNTED TO:
 CONCRETE

MARCUS PAC - UIHLEIN HALL
 929 NORTH WATER STREET
 MILWAUKEE, WI 53202

COMPLIANCE WITH THE REQUIRED LOCAL, NATIONAL BUILDING, ADA, AND SAFETY CODES IS THE EXCLUSIVE RESPONSIBILITY OF THE OWNER/ARCHITECT/CONTRACTOR. SEATING LAYOUT DRAWINGS ARE BASED ON CODE REQUIREMENTS FOR ASSEMBLY SEATING AS FOUND IN INTERNATIONAL BUILDING CODE (IBC) AND ADA CODE. CODE INFORMATION ABOVE IS OFFERED FOR INFORMATIONAL PURPOSES ONLY. IRWIN SEATING COMPANY TAKES NO RESPONSIBILITY FOR CODE INTERPRETATION OR COMPLIANCE.

RELEASE / REVISION	BY DATE
A INITIAL RELEASE	AGW 9/15/20
B PER NEW INFORMATION RECEIVED	AGW 10/21/20
C ADDED COLOR SCHEME TO LAYOUT	AGW 11/03/20
D INSTALLATION COPY RELEASE	AGW 12/07/20
E AS-BUILT RELEASE	AGW 4/19/21
F AS-BUILT RELEASE	AGW 6/25/21

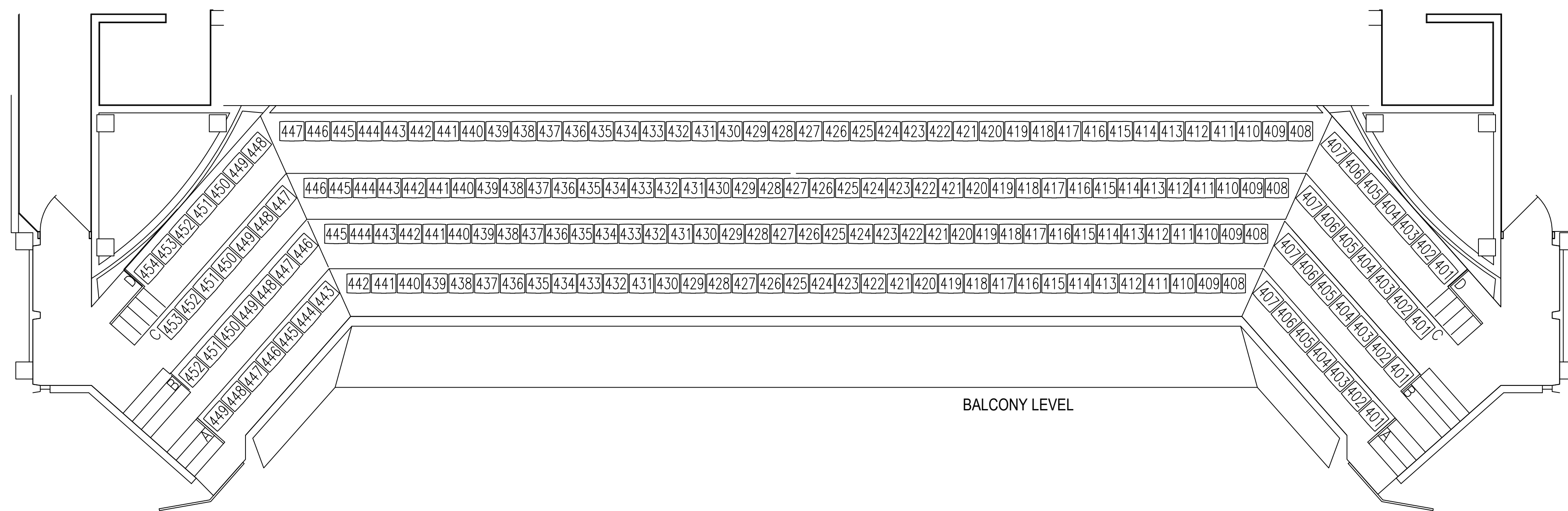
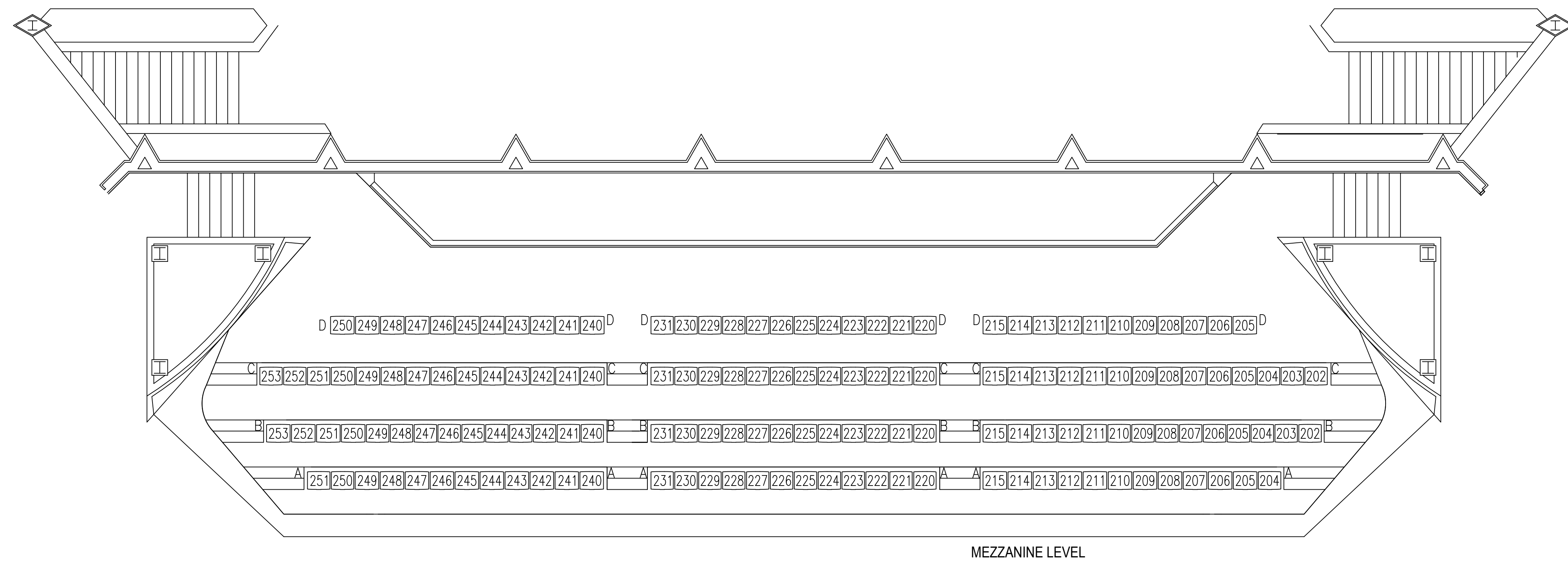


INSTALLATION COPY
 DESIGN INTENT OF CHAIRS IS TO BE MOUNTED TO:
 CONCRETE

MARCUS PAC - UIHLEIN HALL
 929 NORTH WATER STREET
 MILWAUKEE, WI 53202

COMPLIANCE WITH THE REQUIRED LOCAL, NATIONAL BUILDING, ADA, AND SAFETY CODES IS THE EXCLUSIVE RESPONSIBILITY OF THE OWNER/ARCHITECT/CONTRACTOR. SEATING LAYOUT DRAWINGS ARE BASED ON CODE REQUIREMENTS FOR ASSEMBLY SEATING AS FOUND IN INTERNATIONAL BUILDING CODE (IBC) AND ADA CODE. CODE INFORMATION ABOVE IS OFFERED FOR INFORMATIONAL PURPOSES ONLY. IRWIN SEATING COMPANY TAKES NO RESPONSIBILITY FOR CODE INTERPRETATION OR COMPLIANCE.

RELEASE / REVISION	BY	DATE
A INITIAL RELEASE	AGW	9/15/20
B PER NEW INFORMATION RECEIVED	AGW	10/21/20
C ADDED COLOR SCHEME TO LAYOUT	AGW	11/03/20
D INSTALLATION COPY RELEASE	AGW	12/07/20
E AS-BUILT RELEASE	AGW	4/19/21
F AS-BUILT RELEASE	AGW	6/25/21



INSTALLATION COPY

DESIGN INTENT OF CHAIRS IS TO BE MOUNTED TO:
 CONCRETE

MARCUS PAC - UIHLEIN HALL
 929 NORTH WATER STREET
 MILWAUKEE, WI 53202

ORIGINATED BY: ANDY WRIGHT
 CONTACT INFORMATION
 E-MAIL: andy.wright@irwinseating.com
 PHONE: (616) 574-7186

PROJECT NUMBER
Z001477
 SHEET: **3** OF **3**

SCALE: 3/16" = 1'-0"